

Texel Fly-in Cinema 2019

ADDITIONAL INFORMATION

Thank you for your application to join our fly-in. In this news flash you'll find additional information about the fly-in. Please read this information!

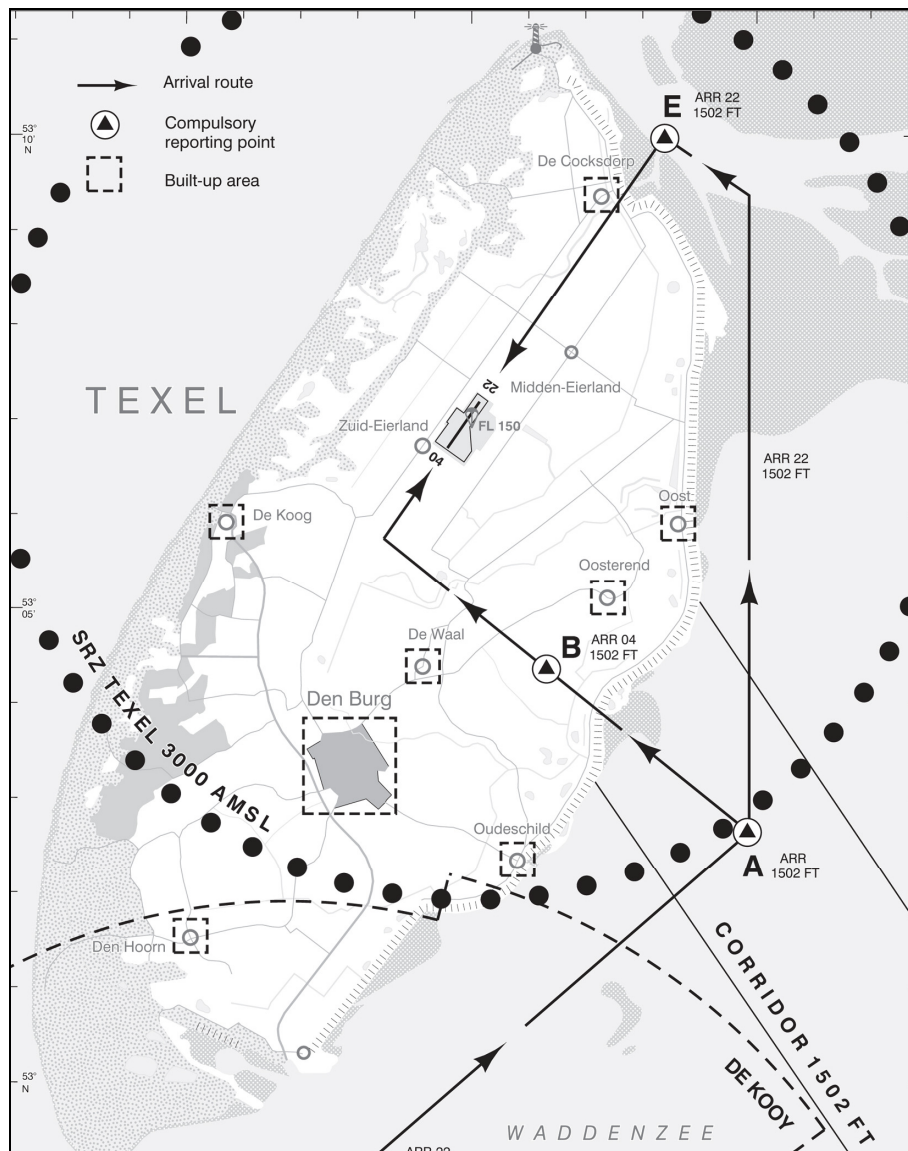
Procedures

The weekendprocedures are active during the fly-in:

http://www.texelairport.nl/facilities/EH-AD-2.EHTX_2018.pdf

Due to the expected traffic the procedures are as followed between 1000Z-1700Z on Saturday:

- Runway 22L : All traffic via point **A** outside the coast to **E** for a straight in.
- Runway 04R : All traffic via point **A** en **B** for a direct righthand baseleg.
- Runway 31-13: Normal circuit at 1.000 ft.



We prefer a minimum altitude of **1.500** feet over Texel for all traffic and to avoid the nature reserves and built up areas as much as possible.



Opening hours Texel Airport

Friday and Saturday : 09.00 – 19.00 local time

Sunday : 10.00 – 19.00 local time

Costs

The entry fee for the fly-in is **€ 25,00** per (registered) aircraft. This includes one landing and a maximum of two night stops. You can pay upon arrival.

Other costs

- Menu De Vlijt for Saturday the 25th (all served with fries and salad)
 - Hamburger Fly-in € 15,50
 - Plaice fillet with remoulade sauce € 16,50
 - Spare ribs € 18,50
- Breakfast on Sunday morning (from 08.00 hrs). € 10,00 p.p.
- Camping at the airport. Free
- Cinema 22.00 hrs on Saturday with IRON EAGLE! € 10,00 p.p.

You can pay the meals in the restaurant and the ticket for the movie at the gate with Outdoor Cinema.

During the break drinks and more in De Vlijt. After the movie De Vlijt is closed.

We do expect you will join the dinner on Saturday evening as well as the breakfast on Sunday morning (if you'll camp under the wing!). If NOT, please let us know, so we can inform the restaurant about the expected numbers.

Accommodation

If you need a hotel or bed & breakfast, please contact the tourist office as soon as possible. Bookings for 1 night via this office is not possible. You have to arrange this direct with the hotel. There might be a possibility that we can find rooms, as soon as you're here.

On www.texel.net you can find a lot of accommodations.

Stichting VVV Texel Promotion - Tel: +31 222 31 47 41

For more information about accommodation visit our website www.texelairport.nl. See the subject "LINKS".

We have permission from the local council to camp at the airport close to your aircraft. We do have a mobile toilet unit, but we don't have showers.

Campingrules

- Please do not leave any rubbish on the airport.
- Please do not make any noise during the night.
- Be careful when walking to your aircraft during the night.
- No smoking on the airport
- The lavatory units are located near the fire fighting rescue hangar next to the Texel Tower.

And finally

Please check your details Participants-file

www.texelairport.nl/downloads/ParticipantsCinema2019.pdf. If there are any changes, please inform us as soon as possible. We use this file for the total number of persons for the Saturday evening dinner and the breakfast.

We are looking forward to see you at Texel!

Happy landings!

Texel Airport, Outdoor Cinema and Airportrestaurant De Vlijt

