

Fly-in Cinema Texel 28 May 2016

ADDITIONAL INFORMATION

Thank you for your application to join our fly-in. In this news flash you'll find additional information about the fly-in. Please read this information!

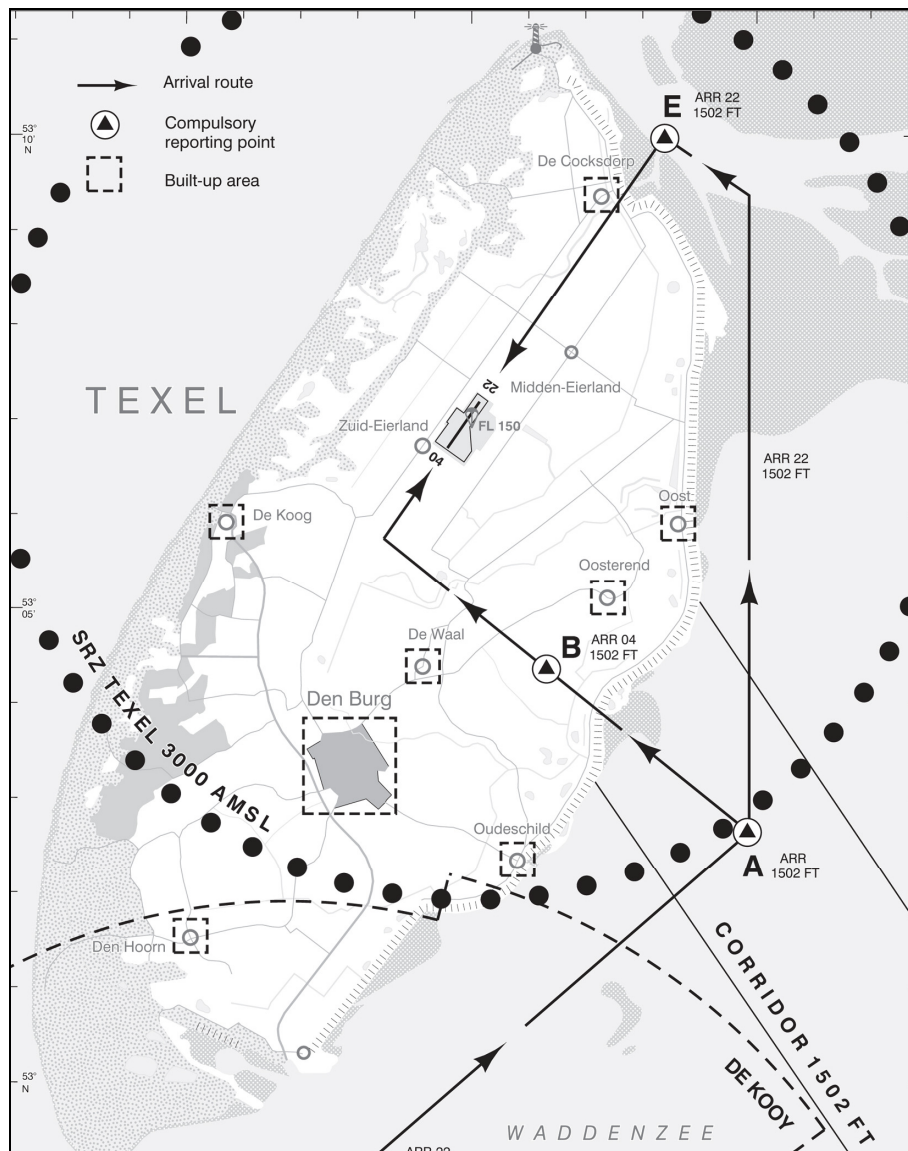
Procedures

The weekend procedures are active during the fly-in:

<http://www.texelairport.nl/facilities/EH-eSUP-2016-01.pdf>

Due to the expected traffic the procedures are as followed between 1000Z-1700Z on Saturday:

- Runway 22L : All traffic via point **A** outside the coast to **E** for a straight in.
- Runway 04R : All traffic via point **A** en **B** for a direct righthand baseleg.
- Runway 31-13: Normal circuit at 1.000 ft.



We prefer a minimum altitude of **1.500** feet over Texel for all traffic and to avoid the nature reserves and built up areas as much as possible.



Opening hours Texel Airport

Friday and Saturday : 09.00 – 19.00 l.t.
Sunday : 10.00 – 19.00 l.t.

Costs

The entry fee for the fly-in is € 25,00 per (registered) aircraft. This includes one landing and a maximum of two night stops. You can pay upon arrival.



Other costs

- Dinner on Saturday evening between 18.00-20.00 € 14,75 p.p.
- Breakfast on Sunday morning (from 09.00 hrs). € 9,75 p.p.
- Camping at the airport. Free
- Cinema 22.00 hrs on Saturday with Flight of the Intruder! € 10,00 p.p.

You can pay dinner and breakfast in the restaurant!

► **For the menu of the Restaurant Texel Airport go to page 3.**

All participants are on the shortlist for dinner on Saturday in the airport restaurant. If you have no intention to join this dinner, please let us know. If you want to join the breakfast on Sunday morning, please report at the desk of the airport restaurant upon arrival.

Accommodation

If you need a hotel or bed & breakfast, please contact the tourist office as soon as possible. Bookings for 1 night via this office is not possible. You have to arrange this direct with the hotel. There might be a possibility that we can find rooms, as soon as you're here.

On www.texel.net you can find a lot of accommodations.

Stichting VVV Texel Promotion - Tel: +31 222 31 47 41

For more information about accommodation visit our website www.texelairport.nl. See the subject "LINKS".

We have permission from the local council to camp at the airport close to your aircraft. We do have a mobile toilet unit, but we don't have showers.

Campingrules

- Please do not leave any rubbish on the airport.
- Please do not make any noise during the night.
- Be careful when walking to your aircraft during the night.
- No smoking on the airport
- The lavatory units are located near the fire fighting rescue hangar next to the Texel Tower.

And finally

Please check your details in the attached Participants-file. If there are any changes, please inform us as soon as possible. We use this file for the total number of persons for the Saturday evening dinner

We are looking forward to see you at Texel!

Happy landings!

Texel Airport, Outdoor Cinema and Restaurant De Horizon



TEXEL INTERNATIONAL AIRPORT HOLLAND



MENU

RESTAURANT DE HORIZON TEXEL - Telefoon 0222-311313

Zaterdag DINNER vanaf 18.00 - 20 .00 uur (€ 14,75 p.p.)

American Style Dinner

- Maïskorn soep
- Tomatensoep
- Stokbrood en kruidenboter
- American Style hamburger
- Frites
- Salade
- Diverse sausjes

Voor het ontbijt dient van te voren te worden gereserveerd bij het Vliegvelddrestaurant tel. 0222-311313 of inschrijven bij de bar in het restaurant één dag van te voren!

