

EHTX — TEXEL/Texel

Note: the following sections in this chapter are intentionally left blank:
AD 2.7, AD 2.8, AD 2.11, AD 2.14, AD 2.19, AD 2.20, AD 2.21.

EHTX AD 2.1 AERODROME LOCATION INDICATOR AND NAME

EHTX — TEXEL/Texel

EHTX AD 2.2 AERODROME GEOGRAPHICAL AND ADMINISTRATIVE DATA

1	ARP co-ordinates and site at AD	53°06'55"N 004°50'01"E
2	Direction and distance from (city)	3.5 NM NNE from Den Burg.
3	Elevation/reference temperature	2 ft AMSL/19.5°C.
4	Geoid undulation at AD ELEV PSN	Not AVBL.
5	MAG VAR/annual change	0°E(2010)/8'E.
6	AD operator, postal address, telephone, telefax, email, AFS, website	Post: Texel Airport Ltd. Postweg 120 1795 JS De Cocksdorp, Texel The Netherlands Tel: +31 (0)222 311267 Fax: +31 (0)222 311250 Email: info@texelairport.nl URL: http://www.texelairport.nl
7	Types of traffic permitted (IFR/VFR)	VFR
8	Remarks	1. Aerodrome available for national and international civil air traffic with all types of aircraft up to 6000 kg AUW and gliders. 2. Aerodrome authority can admit aircraft with higher AUW.

EHTX AD 2.3 OPERATIONAL HOURS

1	AD operator	MON-SAT: 0800-1800 (0700-1700), SUN and HOL: 0900-1800 (0800-1700) or end of UDP, whichever is earlier. Outside AD OPR HR: O/R.
2	Customs and immigration	Customs: AD OPR HR. Immigration: NA.
3	Health and sanitation	NA
4	AIS briefing office	NA
5	ATS reporting office (ARO)	Competent ATS unit: ARO Schiphol, see EHAM AD 2.3.
6	MET briefing office	Self briefing, AD OPR HR.
7	ATS	NA
8	Fuelling	AD OPR HR.
9	Handling	NA
10	Security	NA
11	De-icing	NA
12	Remarks	NIL

EHTX AD 2.4 HANDLING SERVICES AND FACILITIES

1	Cargo-handling facilities	NIL
2	Fuel/oil types	100LL, Jet A1, Euro 95 / -.
3	Fuelling facilities/capacity	100LL: 50 000 litres, Jet A1: 50 000 litres, Euro 95: 500 litres.
4	De-icing facilities	NIL
5	Hangar space for visiting aircraft	Limited AVBL.
6	Repair facilities for visiting aircraft	AVBL O/R.

7	Remarks	NIL
---	---------	-----

EHTX AD 2.5 PASSENGER FACILITIES

1	Hotels	10 rooms at the aerodrome. Sufficient accommodation in Den Burg and De Koog.
2	Restaurants	At the aerodrome.
3	Transportation	Taxi (on request), bus and bicycle.
4	Medical facilities	First aid AVBL.
5	Bank and post office	AVBL in Den Burg.
6	Tourist office	AVBL in Den Burg.
7	Remarks	NIL

EHTX AD 2.6 RESCUE AND FIRE FIGHTING SERVICES

1	AD category for fire fighting	CAT 3.
2	Rescue equipment	2 fire trucks.
3	Capability for removal of disabled aircraft	Information not AVBL.
4	Remarks	NIL

EHTX AD 2.9 SURFACE MOVEMENT GUIDANCE AND CONTROL SYSTEM AND MARKINGS

1	Use of aircraft stand ID signs, TWY guide lines and visual docking/parking guidance system at aircraft stands	NIL
2	RWY and TWY markings and LGT	RWY: white cones; runway threshold identification lights (FLG W, weather depending). TWY: blue cones.
3	Stop bars	NIL
4	Remarks	NIL

EHTX AD 2.10 AERODROME OBSTACLES

For obstacles at and in the vicinity of the aerodrome see AD 2.EHTX-ADC.

EHTX AD 2.12 RUNWAY PHYSICAL CHARACTERISTICS

Designations RWY NR	True BRG	Dimensions of RWY (m)	Strength (PCN) and sur- face of RWY and SWY	THR co-ordinates RWY end co-ordinates THR GUND	THR elevation and highest elevation of TDZ of precision APCH RWY
1	2	3	4	5	6
04	036°	1109 x 40	6000 kg ¹⁾²⁾³⁾ grass	Not AVBL	NA
22	216°	1109 x 40	6000 kg ¹⁾²⁾³⁾ grass	Not AVBL	NA
13	126°	622 x 40	6000 kg ¹⁾²⁾³⁾ grass	Not AVBL	NA
31	306°	622 x 40	6000 kg ¹⁾²⁾³⁾ grass	Not AVBL	NA

Designations RWY NR	Slope of RWY- SWY	SWY dimensions (m)	CWY dimensions (m)	Strip dimensions (m)	OFZ
1	7	8	9	10	11
04	NA	NA	NA	NA	NA
22	NA	NA	NA	NA	NA
13	NA	NA	NA	NA	NA
31	NA	NA	NA	NA	NA

Remarks
12
1) Bearing strength. 2) MAX tyre pressure 0.56 MPa. 3) When surface conditions so permit, the aerodrome manager can admit aircraft with a higher AUW and a higher tyre pressure.

EHTX AD 2.13 DECLARED DISTANCES

RWY Designator	TORA (m)	TODA (m)	ASDA (m)	LDA (m)	Remarks
1	2	3	4	5	6
04	1109	1109	1109	1109	NIL
22	1109	1109	1109	1109	NIL
13	622	622	622	622	NIL
31	622	622	622	622	NIL

EHTX AD 2.15 OTHER LIGHTING, SECONDARY POWER SUPPLY

1	ABN/IBN location, characteristics and hours of operation	Information not AVBL.
2	LDI location and LGT Anemometer location and LGT	LDI and anemometer: 60 m N from helicopter parking area.
3	TWY edge and centre line lighting	NIL
4	Secondary power supply Switch-over time	NIL
5	Remarks	NIL

EHTX AD 2.16 HELICOPTER LANDING AREA

1	Co-ordinates TLOF or THR of FATO Geoid undulation	NIL
2	TLOF and/or FATO elevation m/ft	NIL
3	TLOF and FATO area dimensions, surface, strength, marking	NIL
4	True BRG of FATO	NIL
5	Declared distance available	NIL
6	APCH and FATO lighting	NIL
7	Remarks	Helicopter parking area 400 m N from THR RWY 04, lighted.

EHTX AD 2.17 ATS AIRSPACE

1	Designation and lateral limits	NA
2	Vertical limits	NA
3	Airspace classification	G
4	ATS unit call sign Language(s)	NA
5	Transition altitude	IFR: 3000 ft AMSL; VFR: 3500 ft AMSL.
6	Hours of applicability	NA
7	Remarks	NIL

EHTX AD 2.18 ATS COMMUNICATION FACILITIES

Service designation	Call sign	Channel/ Frequency (MHz)	Hours of operation	Remarks
1	2	3	4	5
Aerodrome information	Texel Radio	119.300	See EHTX AD 2.3	NIL

EHTX AD 2.22 FLIGHT PROCEDURES

1 VFR FLIGHT PROCEDURES AND REGULATIONS

Note: for visual approach chart and traffic circuits see AD 2.EHTX-VAC.

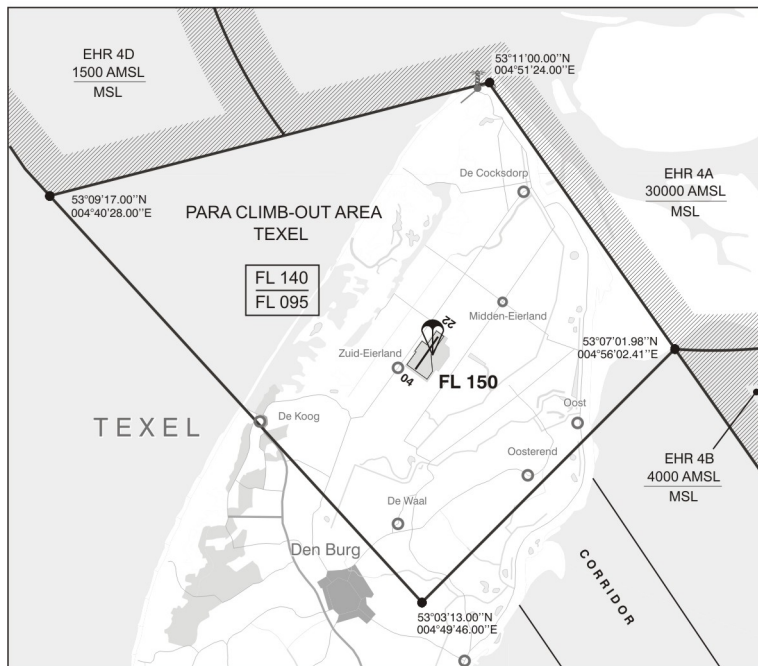
1. The minimum approach altitude is 1502 ft AMSL (1500 ft AAL).
2. The circuit altitude is 1002 ft AMSL (1000 ft AAL).
3. The visual traffic circuit must be carried out within the lateral limits of the circuit area associated with the runway in use.
4. Joining and leaving the circuit shall take place in accordance with the rules of the standard circuit (see ENR 1.2 paragraph 8), except as described for the following runways:
 - **RWY 04:** after take-off climb to 1000 ft on runway heading and leave the circuit as indicated in the chart.
 - **RWY 22:** after take-off climb on runway heading. At orange circuit marker make lefthand turn to crosswind and leave the circuit as indicated in the chart.
 - **RWY 31:** leave the circuit as indicated in the chart.
5. The circuit area may not be overflown below an altitude of 1502 ft AMSL (1500 ft AAL).
6. For motorised civil air traffic above the natural area Waddenzee the following applies:
 - a. flights below 1500 ft AGL are not allowed;
 - b. when ceiling < 1500 ft AGL or flight visibility < 8 km, flights between 1000 ft AGL and 1500 ft AGL are allowed within the corridors depicted on chart ENR 6-5.3 (see ENR 5.6 paragraph 1).
 - c. If weather conditions permit, pass the Texel coast at 1500 ft AMSL or above.
 - d. Descend to circuit altitude after passing the villages Oosterend and Oost.
7. Built-up areas and dunes shall be avoided as much as possible.
8. Marked areas must be avoided.

EHTX AD 2.23 ADDITIONAL INFORMATION

1 CAUTIONS AND ADDITIONAL INFORMATION

1. Parachute jumping may take place as stated in ENR 5.5 and/or as promulgated by NOTAM.
2. To accommodate parachute jumping from MAX FL 140 the para climb-out area Texel is established in TRA 10.

Area	Lateral Limits	Upper limit Lower limit
Para climb-out area Texel	53°09'17.00"N 004°40'28.00"E; 53°11'00.00"N 004°51'24.00"E; 53°07'01.98"N 004°56'02.41"E; 53°03'13.00"N 004°49'46.00"E; to point of origin.	FL 140 FL 095

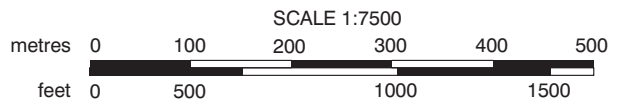
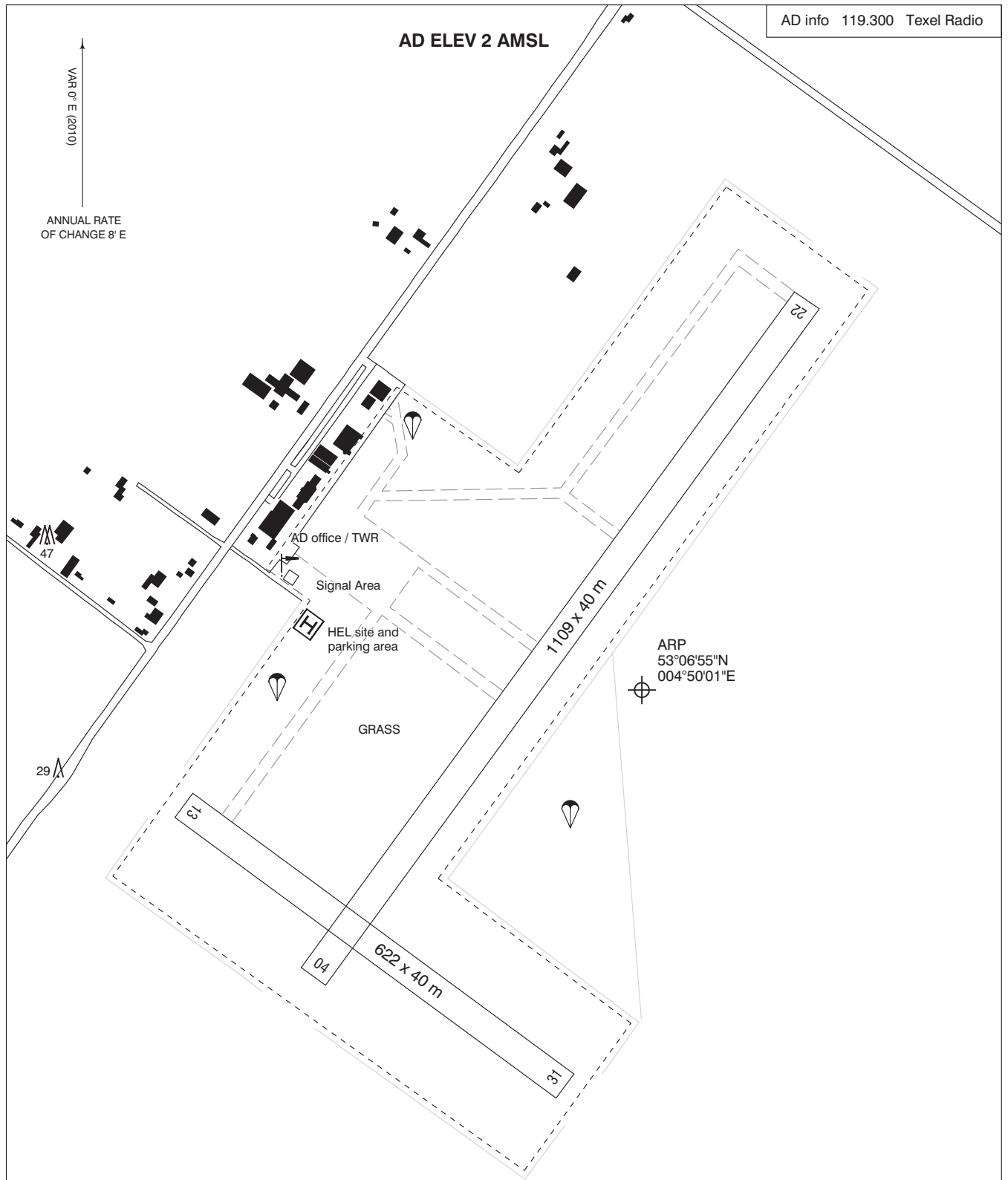


3. Grass cutting may take place at irregular times.

EHTX AD 2.24 CHARTS RELATED TO AN AERODROME

Type of chart	Page
Aerodrome chart	AD 2.EHTX-ADC
Visual approach chart	AD 2.EHTX-VAC

AD info 119.300 Texel Radio



PHYSICAL CHARACTERISTICS		BEARING STRENGTH		
RWY	DIRECTION GEO	MAX AUW*	MAX TYRE PRESS*	SURFACE
04	036°	6000 kg	0.56 MPa	GRASS
22	216°	6000 kg	0.56 MPa	GRASS
13	126°	6000 kg	0.56 MPa	GRASS
31	306°	6000 kg	0.56 MPa	GRASS

* When surface conditions so permit, the aerodrome manager can admit aircraft with a higher AUW and a higher tyre pressure.

ELEVATIONS IN FEET AMSL

LIGHTING AIDS

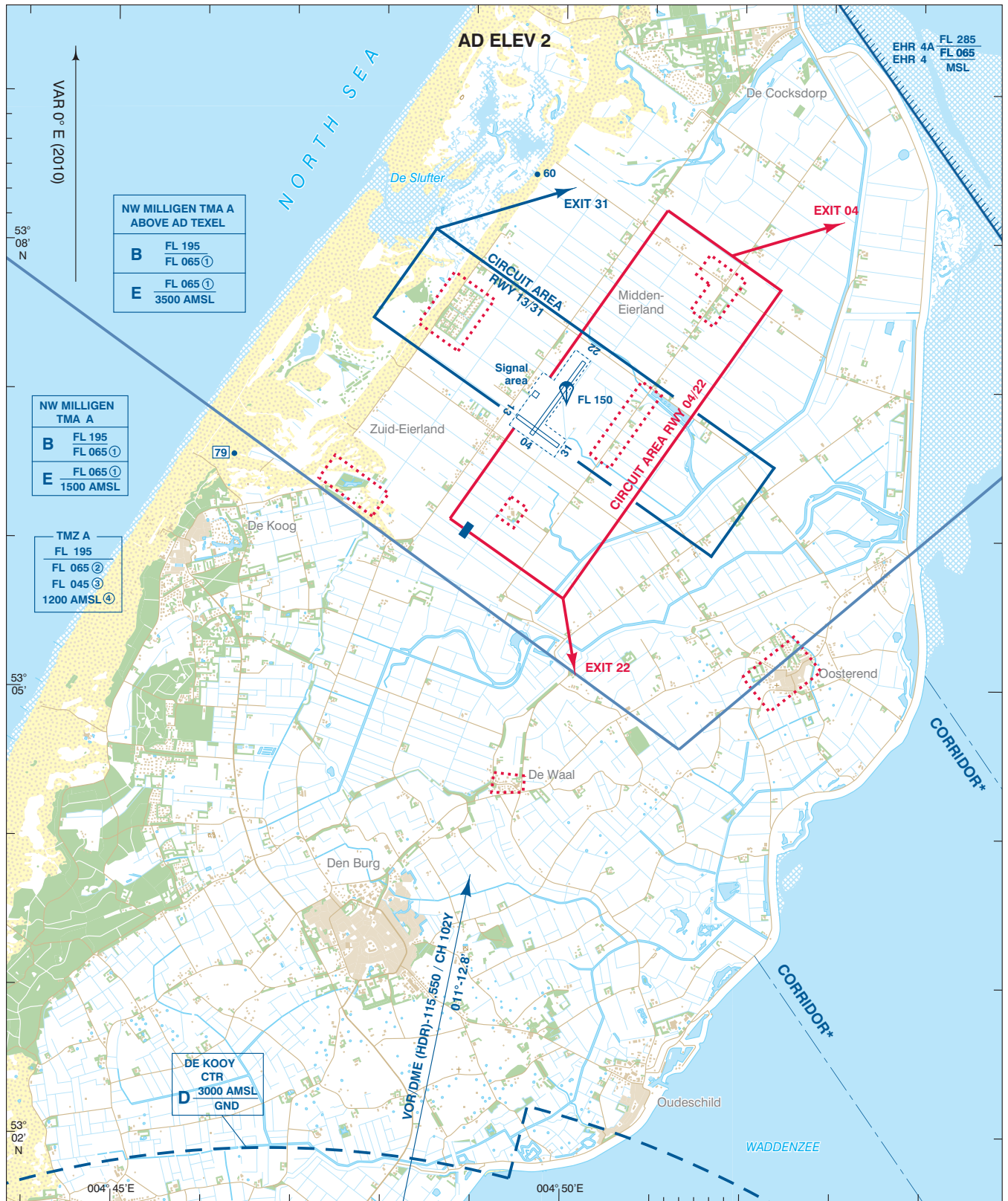
RWY: THR identification lights (FLG W, weather depending).
HEL-site: Lighted.

MARKING AIDS

RWY: White cones.
TWY: Blue cones.

CAUTION

Grass cutting may take place at irregular times.



For description VFR - procedures see EHTX AD 2.22.

- ⋯ Area to be avoided
- Visual circuit marker (orange coloured)

NOTES:

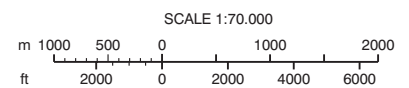
① During weekends FRI 1600 - SUN 2300 (FRI 1500 - SUN 2200 summertime) and HOL classified E up to and including FL 095.

TMZ A:

- ② MON-FRI before 0800 (0700) and after 1600 (1500), SAT, SUN and HOL.
- ③ MON-FRI 0800-1600 (0700-1500), EXCL HOL: lower limit for non-motorised hanggliders and paragliders.
- ④ MON-FRI 0800-1600 (0700-1500), EXCL HOL: lower limit 1200 AMSL

*For motorised civil air traffic above the natural area Waddenzee the following applies:
 • flights below 1500 ft AGL are not allowed.
 • when ceiling < 1500 ft AGL or flight visibility < 8 km, flights between 1000 ft AGL and 1500 ft AGL are allowed within the corridors.

AD Info 119.300 Texel Radio
 FIC (MIL) 132.350 Dutch MIL Info



BEARINGS ARE MAGNETIC
 DISTANCES IN NM
 ALTITUDES AND ELEVATIONS
 IN FEET AMSL

HIGHEST KNOWN ELEVATION
 ON THIS CHART: **79**

