

Contact

Post: Air Traffic Control the Netherlands
 Aeronautical Information Service
 P.O. Box 75200
 1117 ZT Schiphol
 The Netherlands
 Tel: +31 (0)20 406 3521
 Fax: +31 (0)20 406 3532
 AFS: EHAAYOYX

AIP SUP
03/2017
Publication date 16 MAR 2017

TEXEL/TEXEL (EHTX): SEASONAL ARRIVAL AND DEPARTURE ROUTES ON SAT, SUN, AND HOL

1 INTRODUCTION

Yearly from 01 April until 01 October, seasonal arrival and departure routes will be in force on saturday, sunday and public holidays (see AIP GEN 2.1).

2 GENERAL

1. For these procedures the following limits apply: visibility \geq 5 km and ceiling \geq 1500 ft AGL. Below these limits the normal circuit procedures are applicable.
2. Approaches to the aerodrome shall be made at 1500 ft AMSL.
3. Circuit altitude is 1000 ft AMSL.
4. Two-way radio contact on 119.300.
5. During OPR HR De Kooy TWR request for crossing clearance De Kooy CTR.
6. Built-up and shaded areas shall be avoided as much as possible.
7. Parachute jumping may take place.
8. Reporting points:
 - Point A: 3 NM SE of Oosterend.
 - Point B: 2 NM SW of Oosterend.
 - Point C: 4 NM SW of threshold RWY 04.
 - Point D: Coast 2 NM NE of Oosterend.
 - Point E: 3 NM NE of threshold RWY 22.

3 ARRIVAL ROUTES RWY 04/22

See chart appendix A.

1. Pilots are requested to report over the reporting points mentioned hereafter, including final.
2. RWY 04, arriving from SE:
 - Report over point A at 1500 ft AMSL.
 - Proceed direct to point B; past B execute a continuous descent to final RWY 04.
3. RWY 04, arriving from SW:
 - Report over point C at 1500 ft AMSL.
 - Start the descent for final RWY 04.
4. RWY 22, arriving from SE (and De Kooy):
 - Report over point A at 1500 ft AMSL.
 - Turn right via coast line to point D.
 - Turn left on a direct left hand base leg and execute a continuous descent to final RWY 22.
5. RWY 22 arriving from NE:
 - Report over point E at 1500 ft AMSL.
 - Stay well clear of built-up area (De Cocksdorp).
 - Proceed direct for a straight-in RWY 22.

4 DEPARTURE ROUTES RWY 04/22

See chart appendix B.

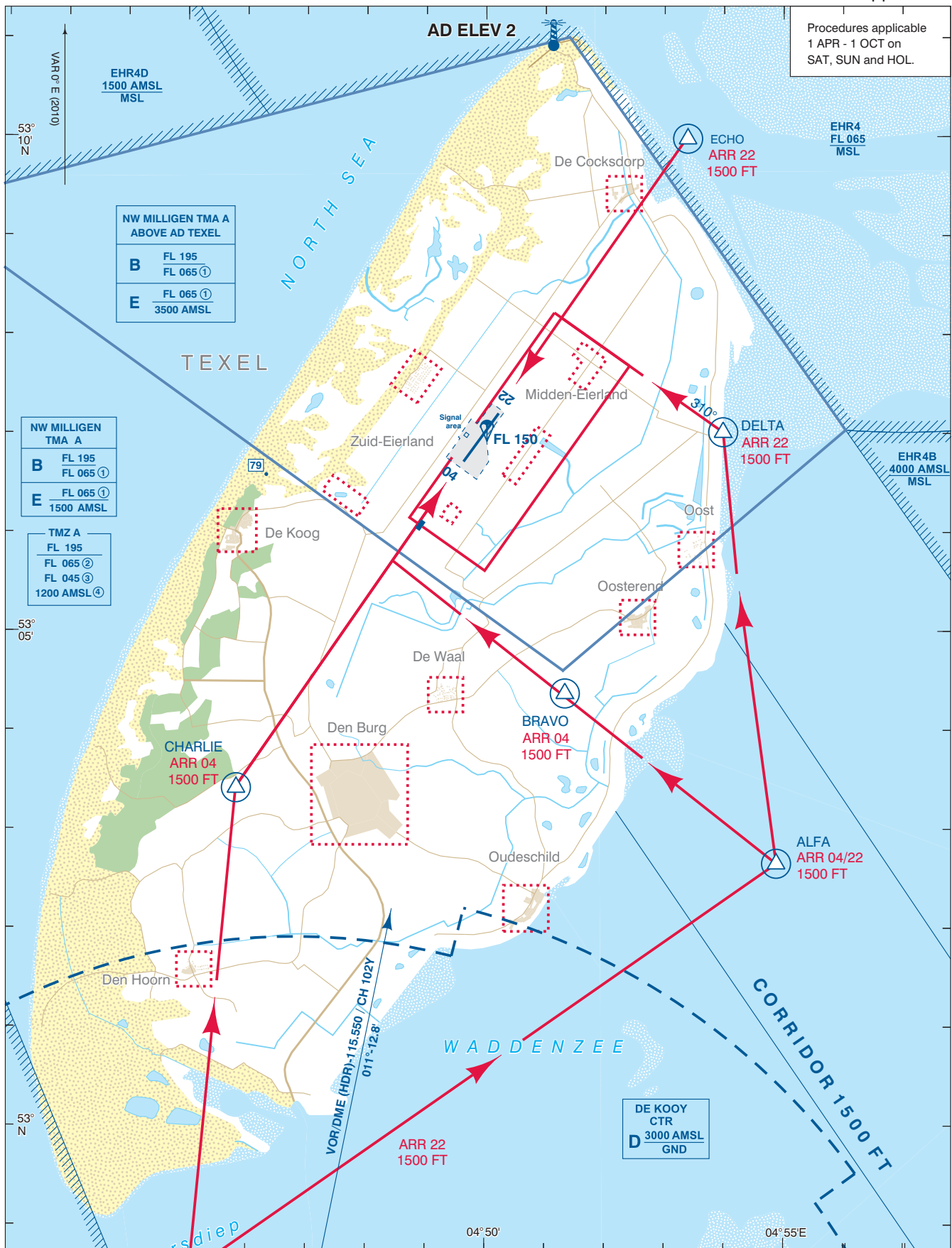
1. Reporting points are on request.
2. RWY 04, departing to the NE:
 - Climb on runway heading to 1500 ft AMSL.
 - Avoid built-up areas.
3. RWY 04, departing to the SE:

-
- Climb on runway heading to 1200 ft AMSL.
 - Make a climbing right turn out to 1500 ft AMSL.
 - Avoid built-up areas.
4. RWY 22, departing to the SW:
- Climb on runway heading to 1500 ft AMSL.
 - Avoid built-up areas , especially Den Burg.
 - Contact De Kooy TWR for crossing the CTR.
5. RWY 22, departing to the SE:
- Climb on runway heading to 1000 ft AMSL.
 - Make a climbing left turn out to 1500 ft AMSL or above.
 - Avoid the built-up areas.

5 ARRIVAL ROUTES RWY 13/31

- Proceed to the aerodrome at 1500 ft AMSL or above.
- Avoid built-up areas.
- Join the standard circuit procedure.
- Circuit altitude is 1000 ft AMSL.

ISSN: 0165-7291



Procedures applicable
1 APR - 1 OCT on
SAT, SUN and HOL.

NW MILLIGEN TMA A
ABOVE AD TEXEL

B	FL 195
	FL 065 ①
E	FL 065 ①
	3500 AMSL

NW MILLIGEN TMA A

B	FL 195
	FL 065 ①
E	FL 065 ①
	1500 AMSL

TMZ A

	FL 195
	FL 065 ②
	FL 045 ③
	1200 AMSL ④

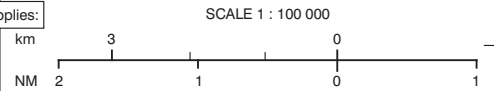
For description VFR - procedures see EHTX AD 2.22.
NOTES:
 ① During weekends FRI 1600 - SUN 2300 (FRI 1500 - SUN 2200 summertime) and HOL classified E up to and including FL 095.
 TMZ A:
 ② MON-FRI before 0800 (0700) and after 1600 (1500), SAT, SUN and HOL.
 ③ MON-FRI 0800-1600 (0700-1500), EXCL HOL: lower limit for non-motorised hanggliders and paragliders.
 ④ MON-FRI 0800-1600 (0700-1500), EXCL HOL: lower limit 1200 AMSL

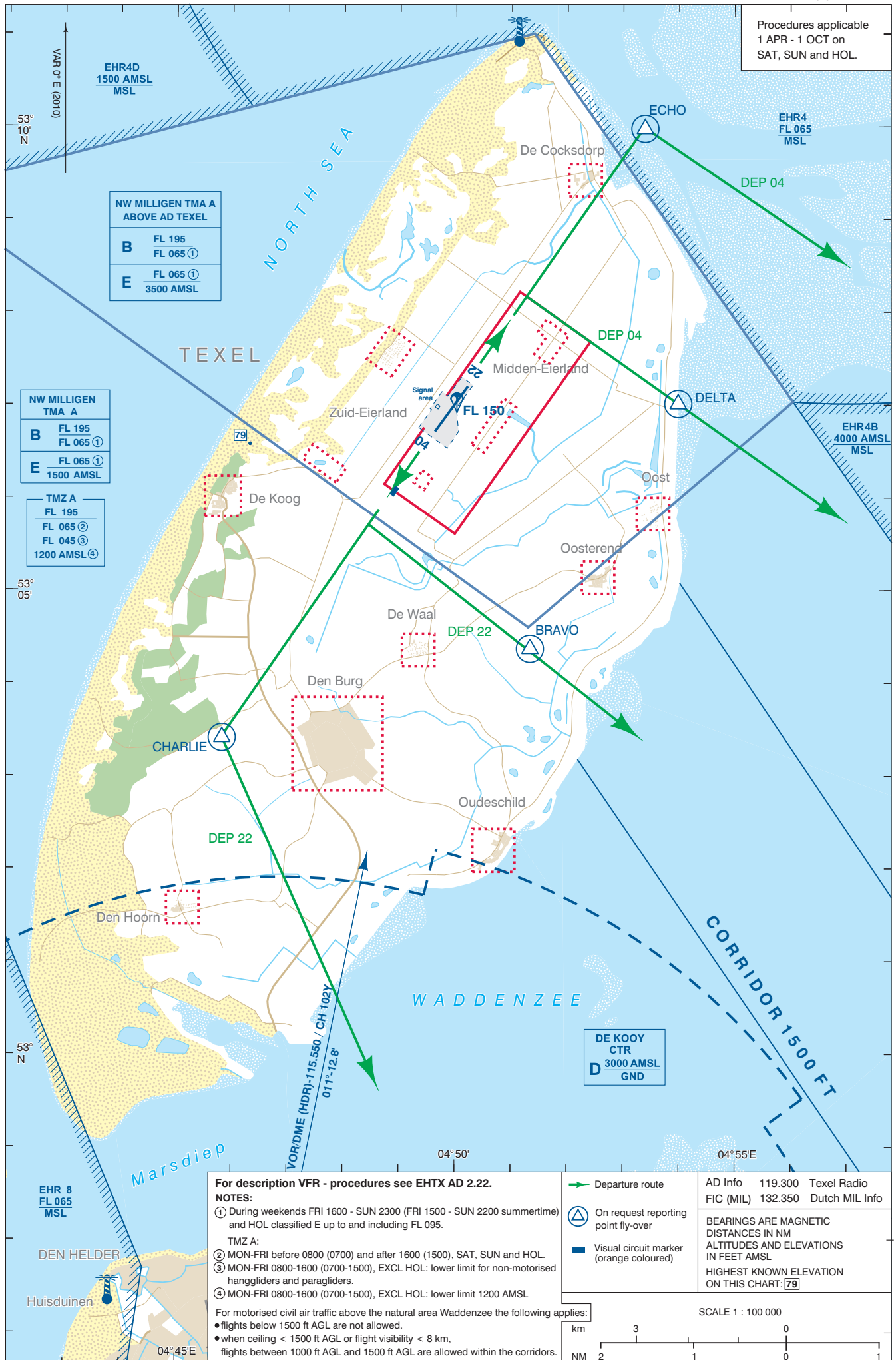
For motorised civil air traffic above the natural area Waddenzee the following applies:
 • flights below 1500 ft AGL are not allowed.
 • when ceiling < 1500 ft AGL or flight visibility < 8 km, flights between 1000 ft AGL and 1500 ft AGL are allowed within the corridors.

➔ Arrival route
 ⓪ On request fly-over reporting point
 ■ Visual circuit marker (orange coloured)

AD Info	119.300	Texel Radio
FIC (MIL)	132.350	Dutch MIL Info

BEARINGS ARE MAGNETIC
 DISTANCES IN NM
 ALTITUDES AND ELEVATIONS
 IN FEET AMSL
 HIGHEST KNOWN ELEVATION
 ON THIS CHART: 79





Procedures applicable
1 APR - 1 OCT on
SAT, SUN and HOL.

NW MILLIGEN TMA A
ABOVE AD TEXEL

B	FL 195 FL 065 ①
E	FL 065 ① 3500 AMSL

NW MILLIGEN
TMA A

B	FL 195 FL 065 ①
E	FL 065 ① 1500 AMSL

TMZ A

FL 195
FL 065 ②
FL 045 ③
1200 AMSL ④

DE KOOY
CTR
D 3000 AMSL
GND

For description VFR - procedures see EHTX AD 2.22.

NOTES:

① During weekends FRI 1600 - SUN 2300 (FRI 1500 - SUN 2200 summertime) and HOL classified E up to and including FL 095.

TMZ A:

② MON-FRI before 0800 (0700) and after 1600 (1500), SAT, SUN and HOL.

③ MON-FRI 0800-1600 (0700-1500), EXCL HOL: lower limit for non-motorised hanggliders and paragliders.

④ MON-FRI 0800-1600 (0700-1500), EXCL HOL: lower limit 1200 AMSL

For motorised civil air traffic above the natural area Waddenzee the following applies:

- flights below 1500 ft AGL are not allowed.
- when ceiling < 1500 ft AGL or flight visibility < 8 km, flights between 1000 ft AGL and 1500 ft AGL are allowed within the corridors.

- ➔ Departure route
- ⊙ On request reporting point fly-over
- Visual circuit marker (orange coloured)

AD Info	119.300	Texel Radio
FIC (MIL)	132.350	Dutch MIL Info

BEARINGS ARE MAGNETIC
DISTANCES IN NM
ALTITUDES AND ELEVATIONS
IN FEET AMSL
HIGHEST KNOWN ELEVATION
ON THIS CHART: 79

